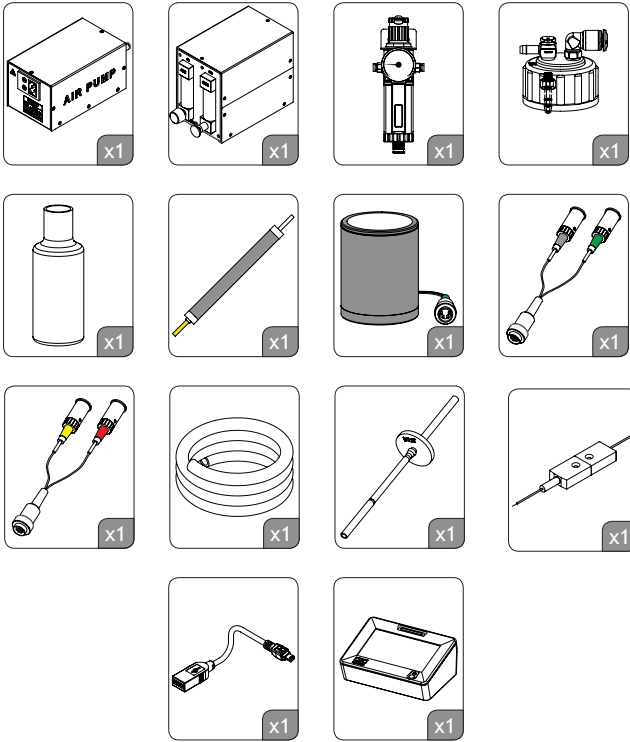


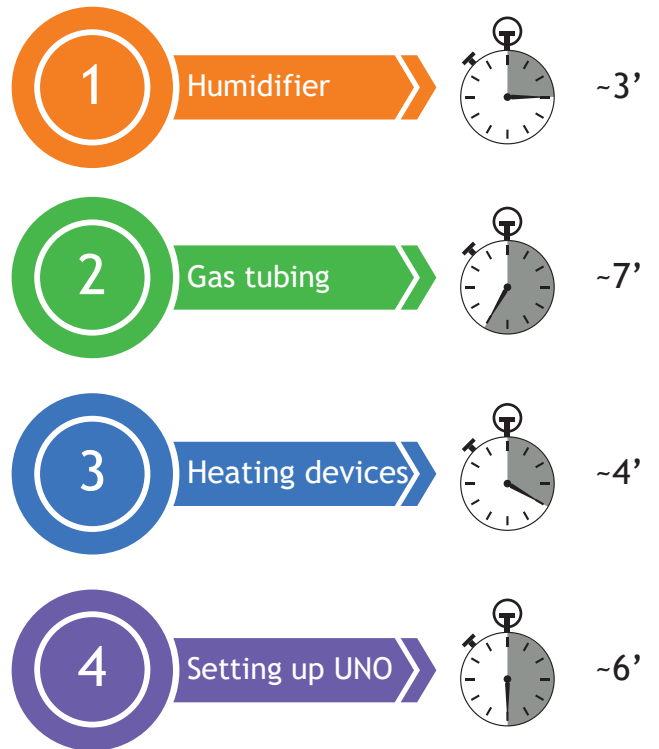
UNO-T-H-CO2



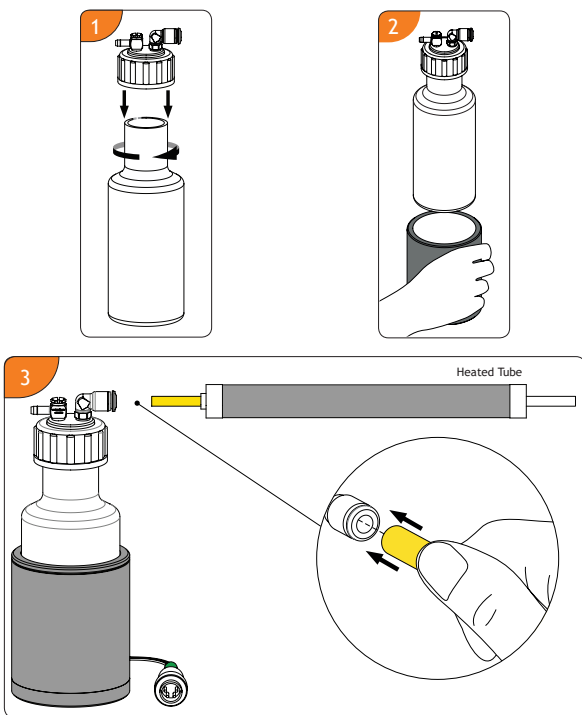
Package Content



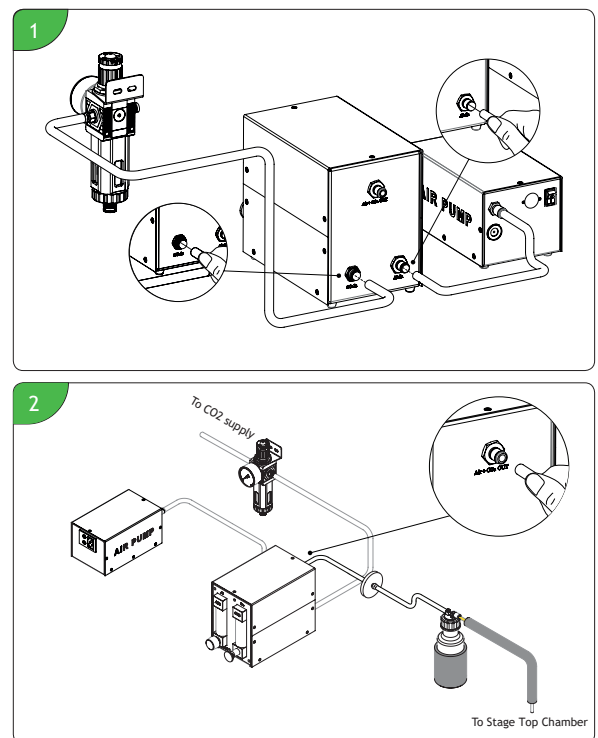
Summary



Humidifier

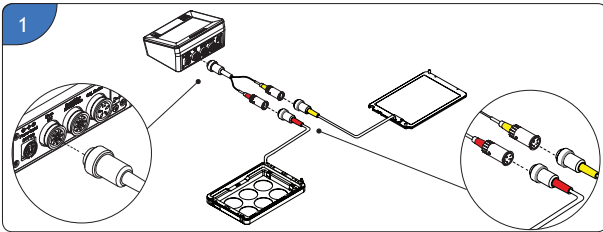


Gas tubing

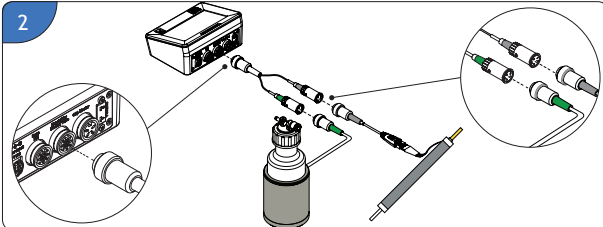


Heating Devices

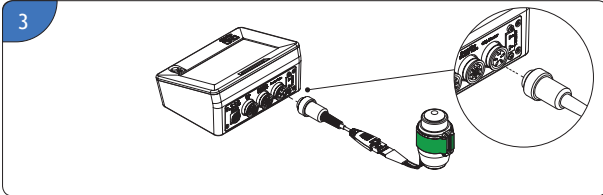
BASE & LID



HUMIDIFIER & HEATED TUBE



OBJECTIVE HEATER (OPTIONAL)



Setting up UNO

1 Selection of Chamber & Insert

- Press 'Settings'
- Press 'Chamber & Insert'
- Select chamber and insert in use, then press 'OK'

2 Selection of Control Mode

- Press 'Settings'
- Press 'Control Mode'
- Select the Control Mode and press 'Save'

NOTE: 'Chamber' control mode uses sensors embedded in the chamber body. Accuracy +/- 0.3°C from set-point, if room T remains within +/- 0.3°C. 'Sample' control mode requires inserting the provided temperature sensor in a reference well. Accuracy +/- 0.1°C regardless of room temperature.

Setting up UNO

3 Humidity control set-up

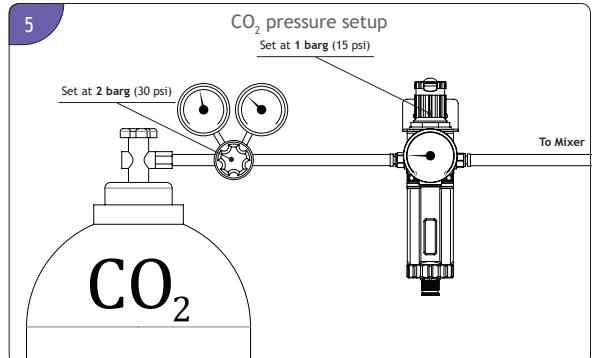
- Check the 'humidity control enabled' box
- Input room temperature
- Press 'Save'

NOTE: it is important to enter the right room temperature. You may check it with the help of the fine gauge thermocouple (green wire)

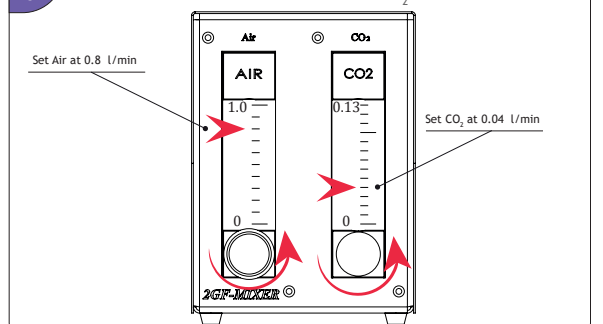
4 Objective Heater (optional)

- Press 'Enabled'
- Press 'OK'

Setting up UNO



6 To achieve a concentration of 5% CO₂ @ 0.8 l/min



QUICK INSTALLATION & USER GUIDE

Temperature range	From 3 °C above ambient to 60 °C
Temperature accuracy	± 0.1 °C in sample feedback mode ± 0.3 °C in chamber feedback mode, if room temperature remains within ± 1 °C
Gas Mixer resolution	1 %
Air Pump, outlet pressure	0.3 atm
Humidity efficiency	85% ca.
Controller dimensions	103 x 130 x 59 mm

